

Valley Machine Shop
7317 Norris Rd
Bakersfield CA 93308
email@eddie.pruett@valleymachineshop.com
PH# 661-589-9529



Five Speed Conversion Parts List

There are several pieces that make up a complete five speed conversion. Listed below are the main parts with descriptions and pricing for each item. I am available to discuss what needs to be done to complete this conversion. If you have any questions please give me a call at the above phone number or email me.

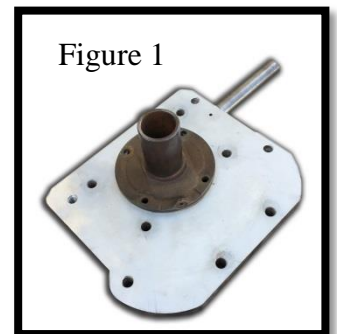
I look forward to working with you on this project.

Best regards,

Eddie Pruett
Valley Machine Shop

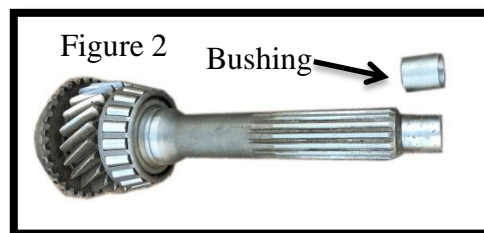
(Figure 1) Picture shows the **Adapter Plate**. This adapter plate allows the five speed transmission to couple to the AA bell housing, it also supports the Model A throw out bearing.

Price: \$300



(Figure 2) photo shows the **Bushing** that will be placed on the Input Shaft of the five speed transmission. There is a small bushing placed on the input shaft and then 1/2 inch has to be cut off of the input shaft of the five speed transmission. When you're ready to perform this operation call me and I will explain how it's done

Price \$25 Bushing Only



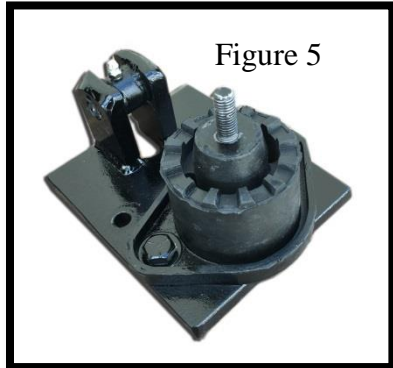
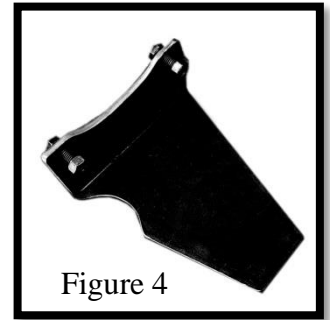
(Figure 3) Shows the **AA Bell housing**. You'll notice that the AA bell housing does not have a place for the brake pedal and clutch pedal. The clutch pedal and brake pedal mount to the Adapter Plate.

Price: Refurbished \$300



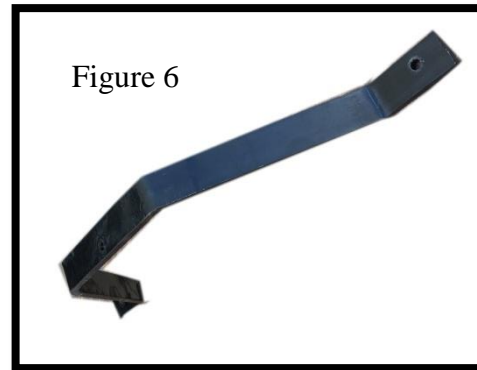
(Figure 4) Shows the **Outboard Support** for the clutch and brake pedal post.

Price: \$45



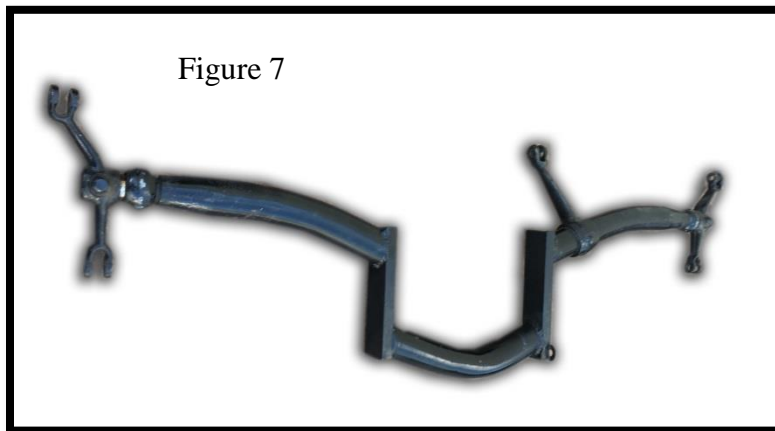
(Figure 5) Shows the **Rear Transmission Mount** which also allows a place for the radius rods to couple to the transmission.

Price: \$150



(Figure 6) Shows the **Rear Transmission Support Mount**

Price: \$40

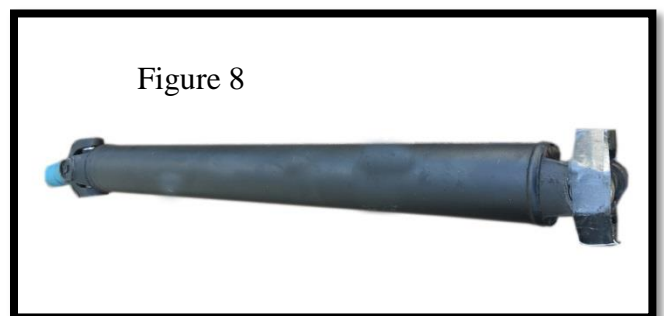


(Figure 7) Shows the **Brake Crossover Adapter**, This adapter is built to replace the brake rod crossover so that it will fit under the five speed transmission, not used with hydraulic brakes

Price: \$200

(Figure 8) shows the **Cut Down Driveline**. The driveline is balanced and the universal joint attached

Price: \$250



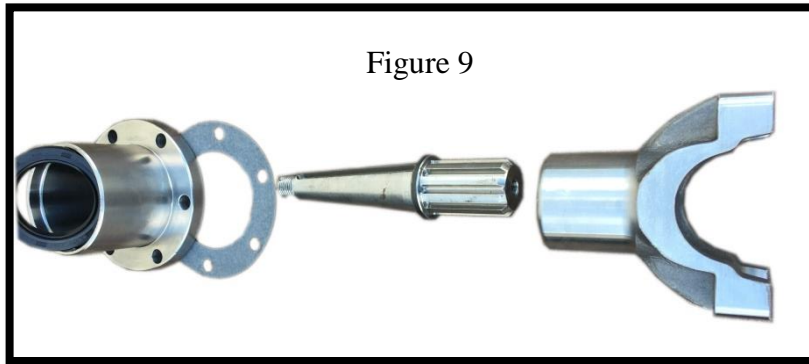


Figure 9

(Figure 9) Shows the **Rear End Adapter**. This adapter replaces the original Model A driveline and allows for the open driveline configuration

Price \$400

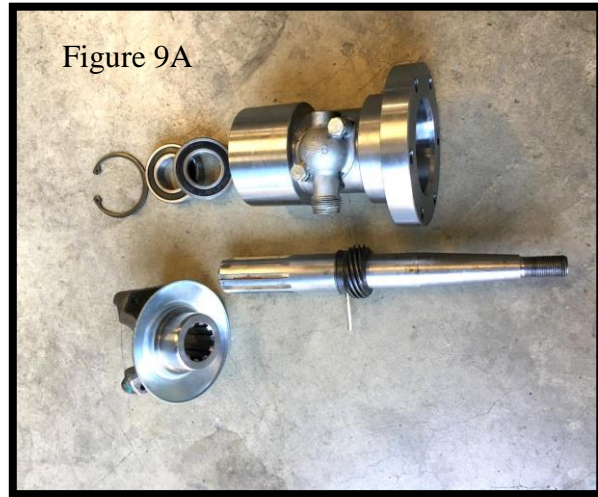


Figure 9A

(Figure 9A) Shows the **Optional Rear End Adapter** that allows you to drive your speedometer off of the rear end adapter. You can now have a speedometer drive when your 5 speed transmission does not have a mechanical output.

Price \$700

(Figure 10) shows the **Emergency Brake Adapter** this allows for the emergency brake handle to be bolted to the Five-Speed Transmission

Price \$75

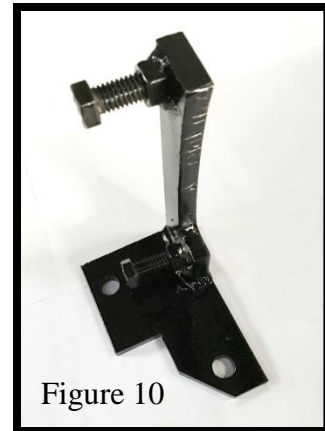


Figure 10



Figure 11

(Figure 11) shows **Throw Out Bearing Carrier**, and return spring to adapt to the T5 transmission snout.

Price: \$70 with new bearing.

(Figure 12) **Transmission Shift Lever** we take the original shift lever and modify it for a short throw and extend it to work in your Model A

Price: \$200 this includes chroming of the top portion of the lever



Figure 12

Five speed transmissions are available from Valley Machine, with all modifications made. You must call for availability.

Price \$600 (Transmission Only)

We also recommend that the radius rods be removed and stitch welded along the bottom seem.

If you are able to bring your car to Bakersfield California we will do the complete installation including radius rod welding.

Price: **\$2000** Plus parts (requires 1 week)

Parts Description	Figure Number	Price USD
Adapter Plate	1	300.00
Input Shaft Bushing for the five speed transmission	2	25.00
AA Bell housing (Refurbished, Call for availability)	3	300.00
Outboard support for the clutch and brake pedal post	4	45.00
Rear transmission mount	5	150.00
Rear transmission support	6	40.00
Break crossover shaft *	7 *	200.00
Cut down driveline	8	250.00
Rear End Adapter	9	400.00
Rear End Adapter (Mechanical Output Option) Requires 10ft Speedometer cable (Not Included)	9A *	700.00
Emergency brake adapter	10	75.00
Throw out bearing carrier	11	85.00
Transmission shift lever *	12 *	200.00
10 ft Speedometer Cable		100.00
Five speed transmissions (When Available)		600.00
Installation In Bakersfield (Call for Appointment)		2,000.00

** Core required for parts with asterisk.*