

Crab Puller Overall Dimensions

CrabPuller.dc

Crab Puller Boom Arm

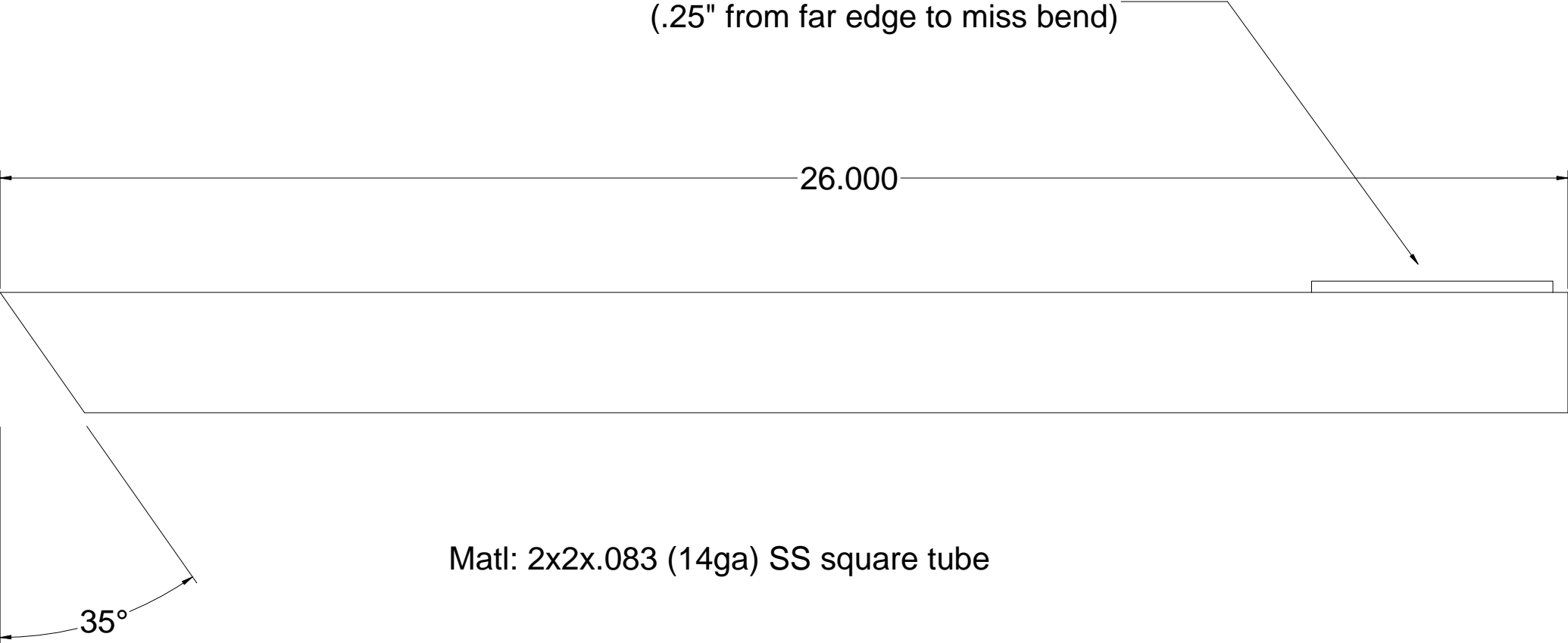
Weld Pulley Mounting Plate
(.25" from far edge to miss bend)

26.000

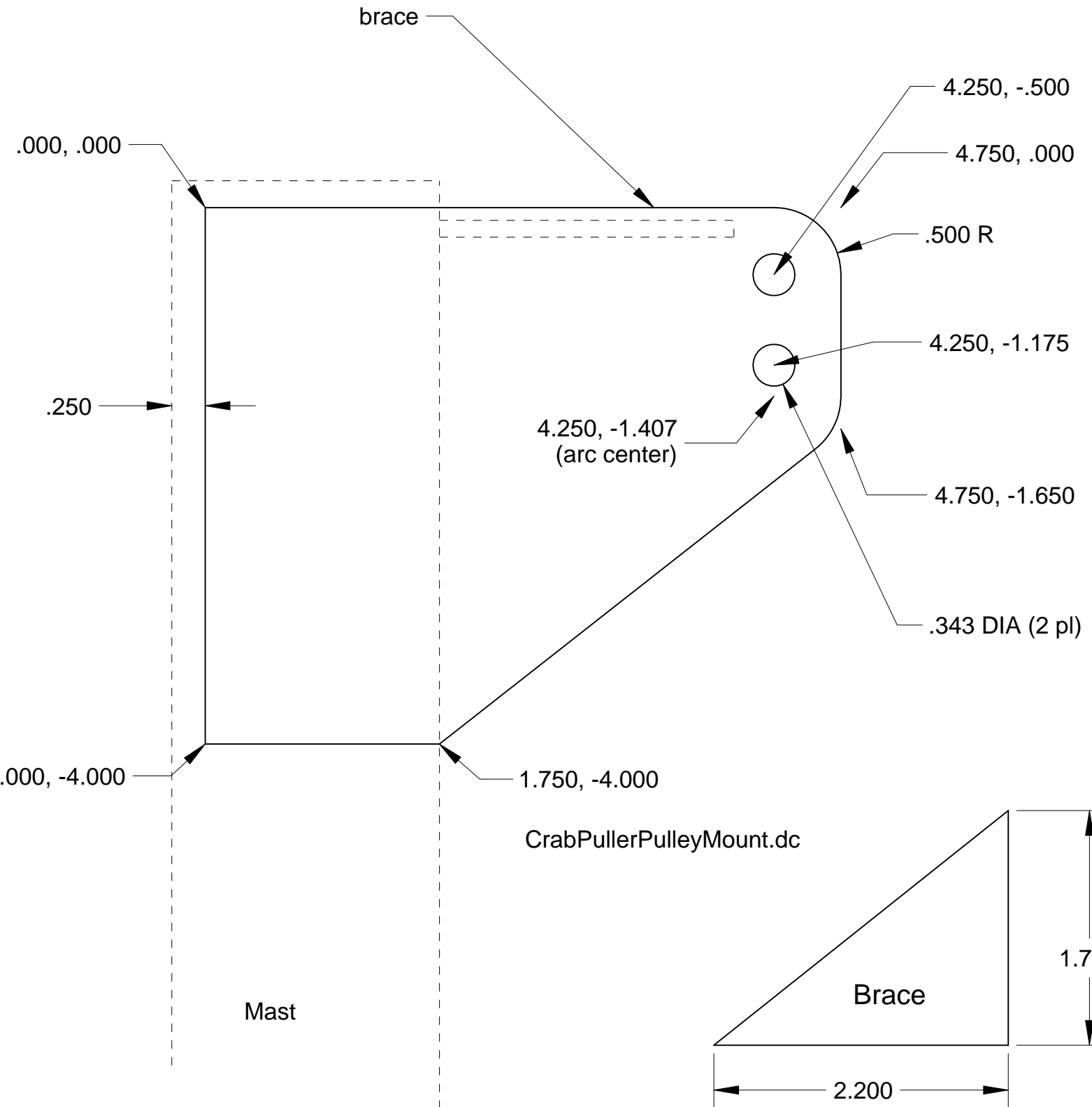
35°

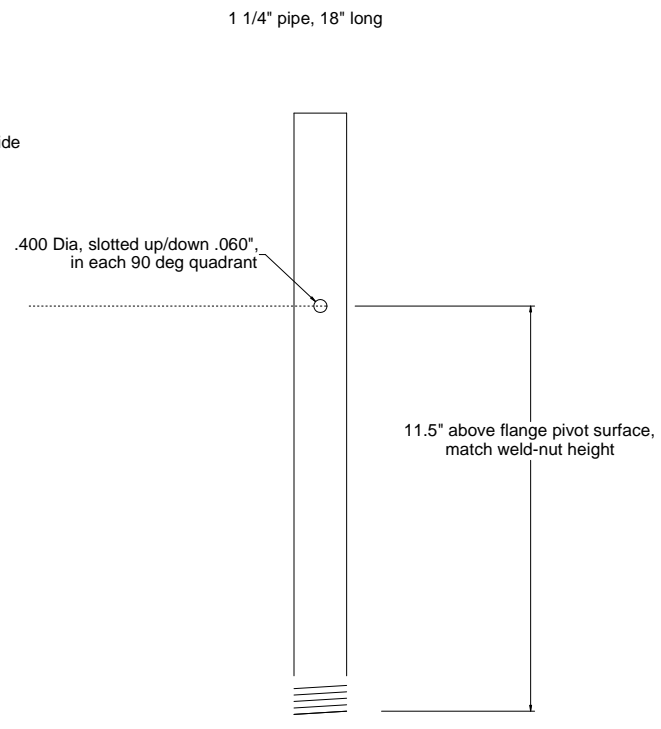
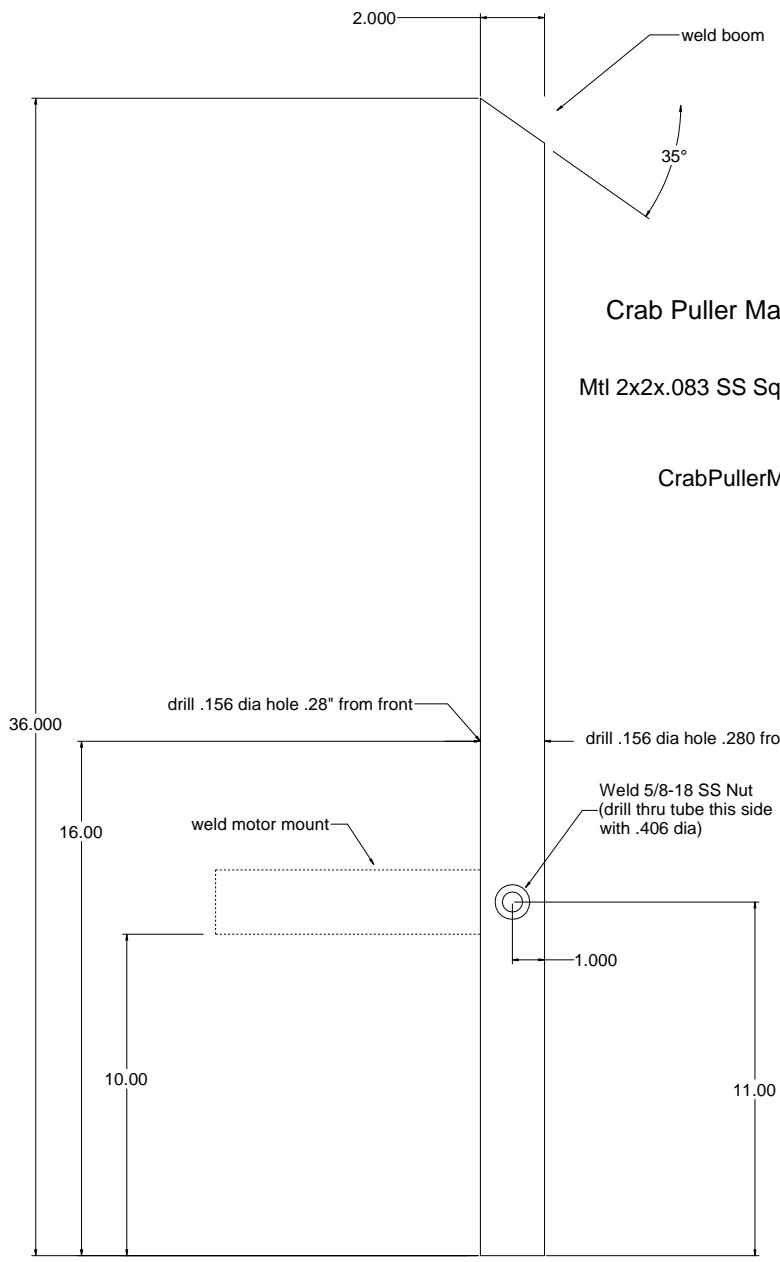
Matl: 2x2x.083 (14ga) SS square tube

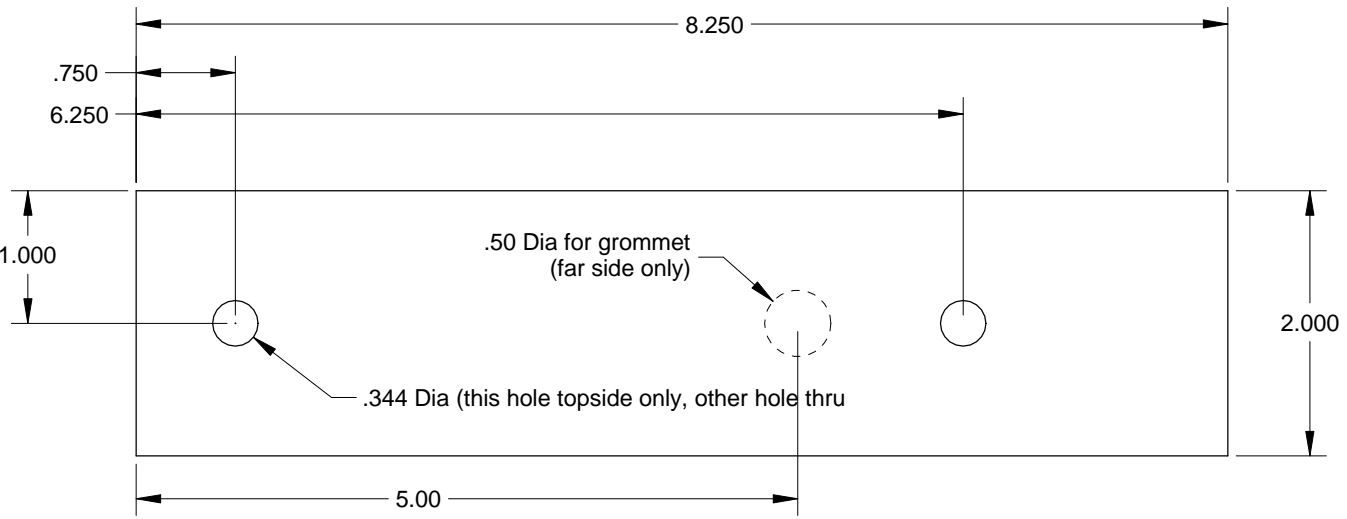
CrabPullerBoomArm.dc



Crab Puller Pulley Mount
Mtl: .125 th SS







Weld this end to upright

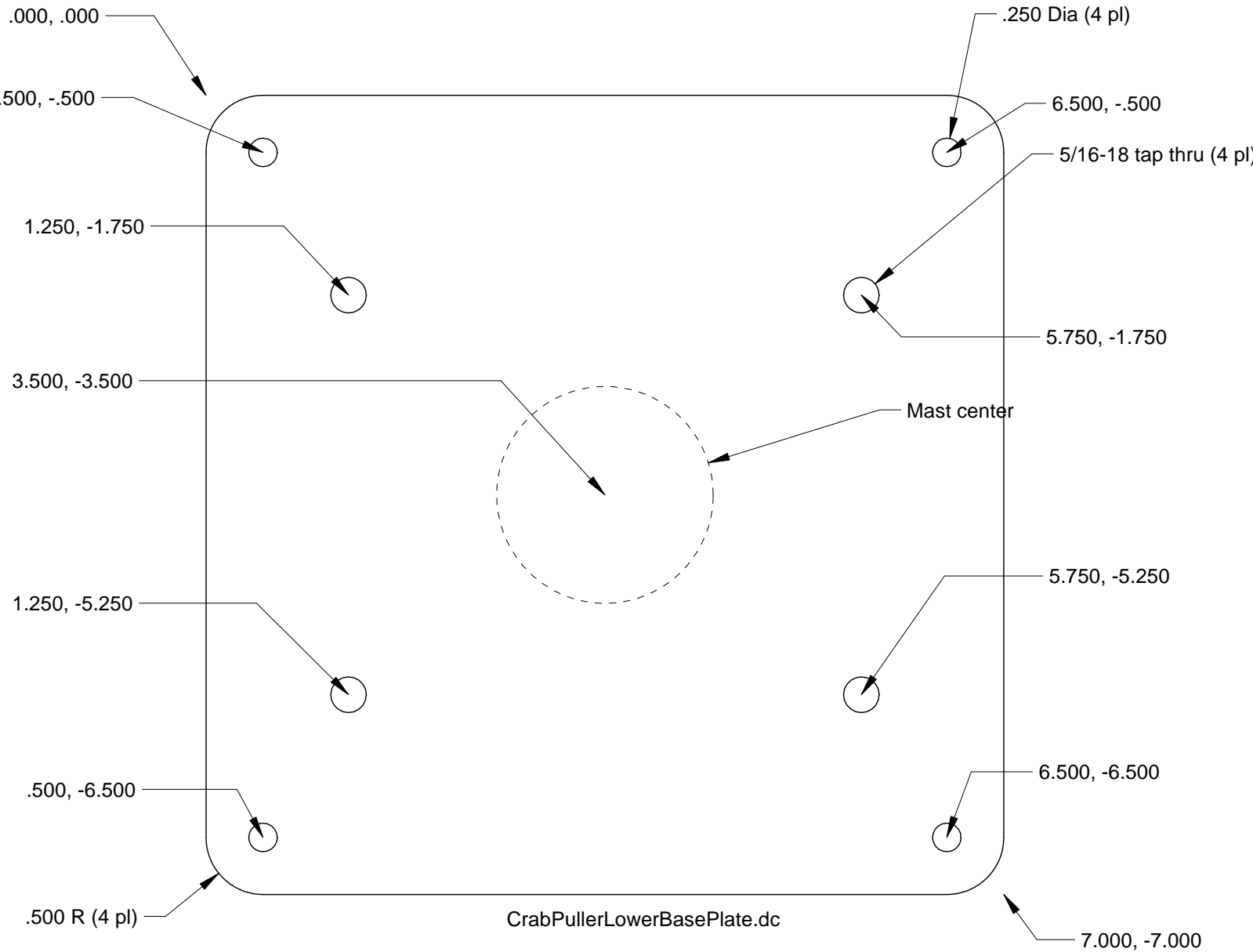
Crab Puller Capstan Mount
Mtl: 2x2x.083 SS Square Tube

CrabPullerCapstanMount.dc

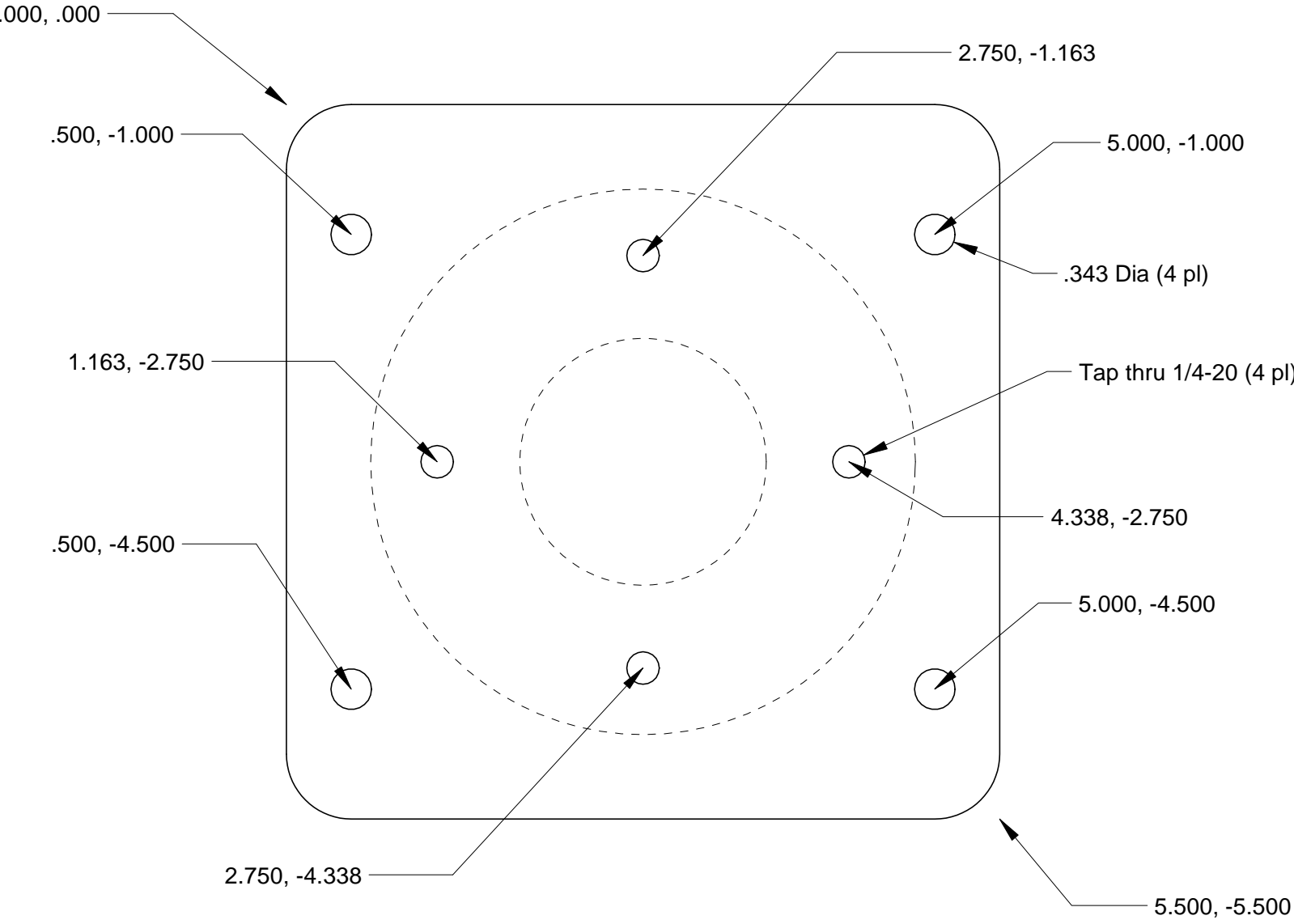


Crab Puller Mounting Base Plate

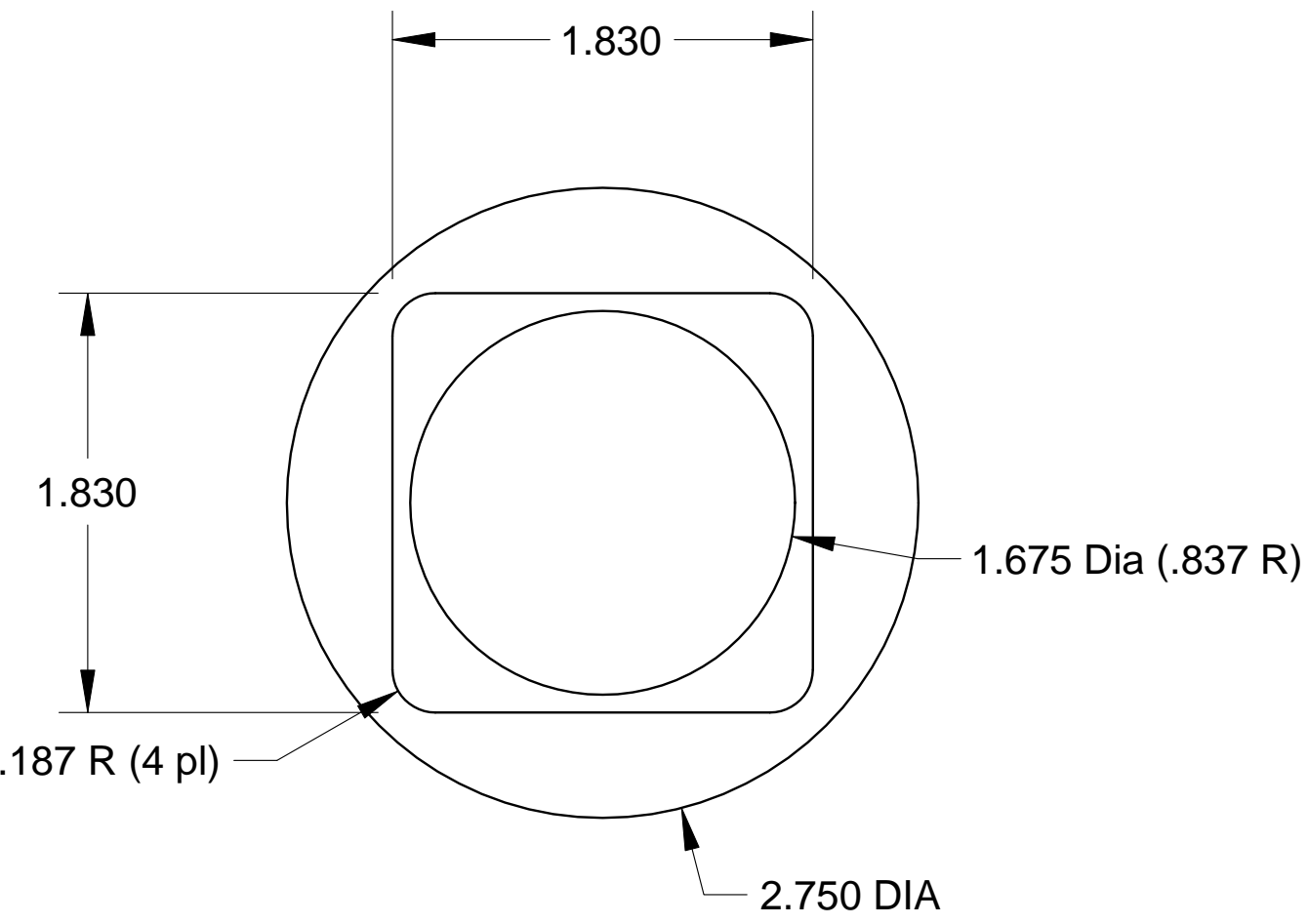
Matl: .5 th AL



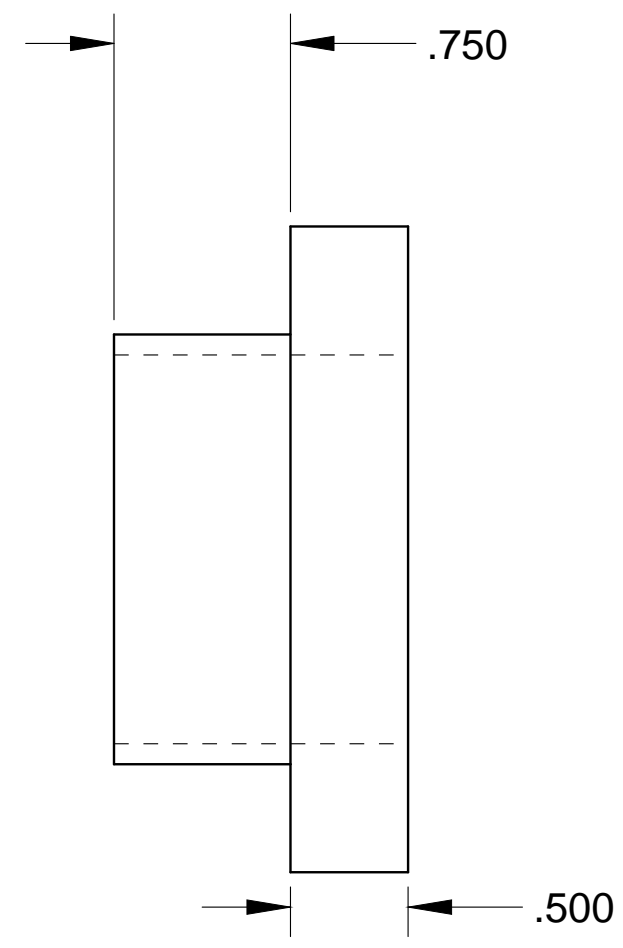
Crab Puller Base Plate
Matl: .5 th AL



CrabPullerUpperBasePlate.dwg

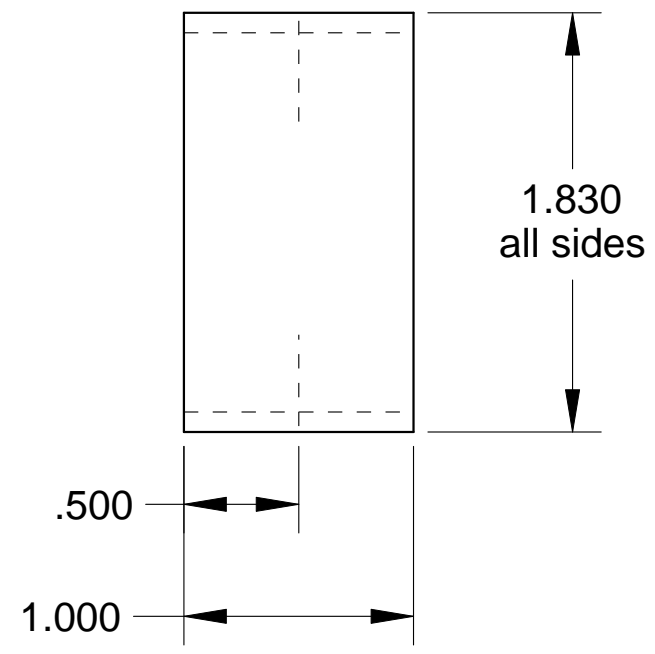
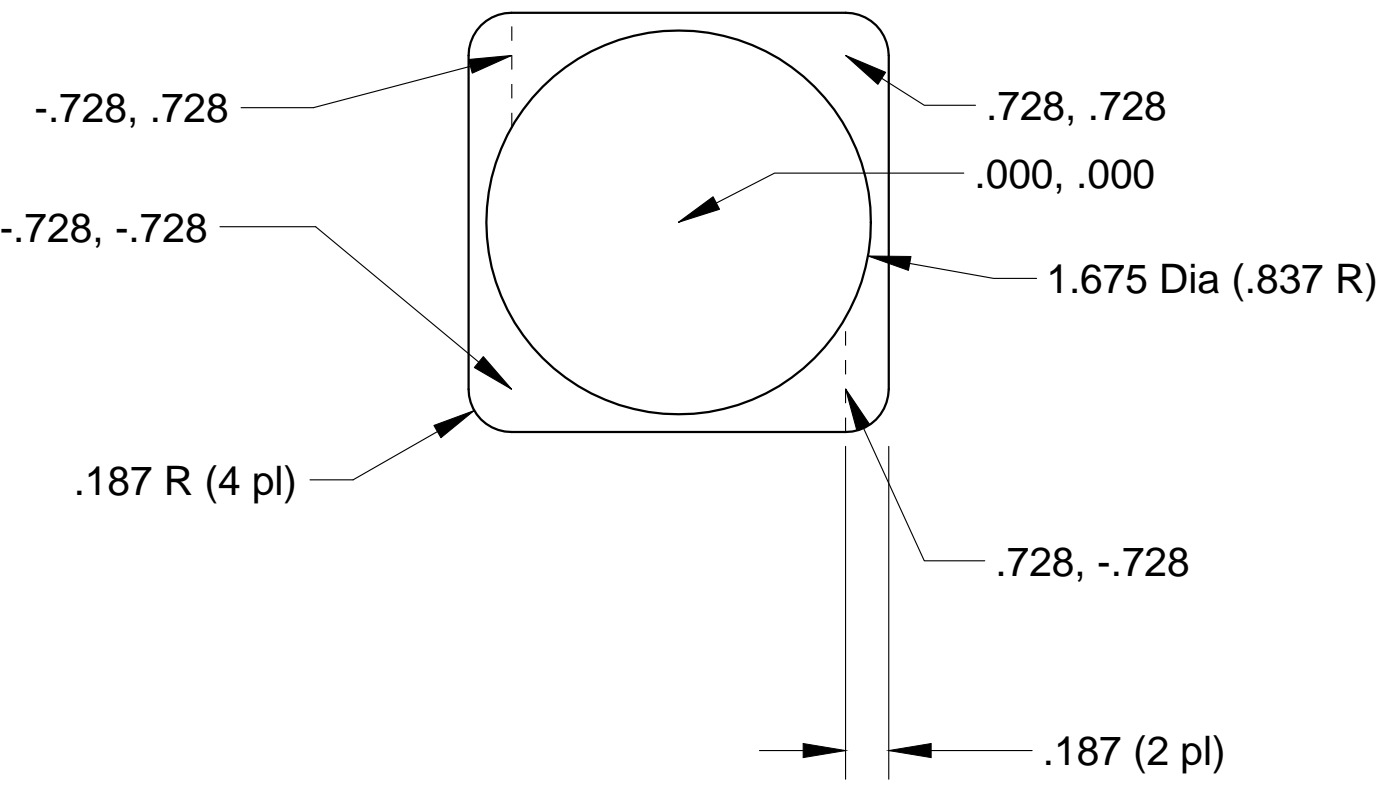


Lower Bushing
Mtl: Delrin



CrabPullerLowerBushing.dc

tap 6-32 (2 pl) - holes
in outside tube .156 dia,
0.280 from outside edge of tube



Upper Bushing
Mtl: Delrin

CrabPullerUpperBushing.dc

Crab Puller Switch Plate

Mtl: .250 th SS

.000, .000

3.000, .000

.688, -3.250

2.313, -3.250

tap thru 10-24 (2 pl)

.500 R (4 pl)

.000, -4.000

3.000, -5.000

CrabPullerSwitchPlate.dwg

