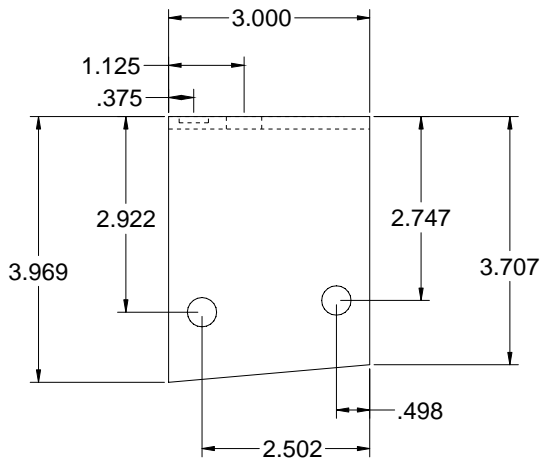
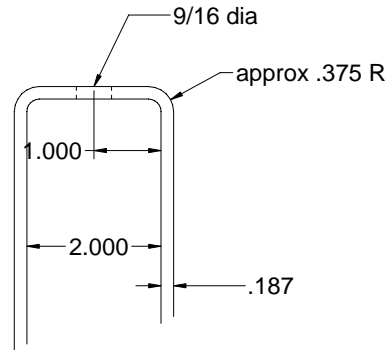


Weight with motor brackets and bolts 19.9 lbs (original design was 11.7)
 Install with (2) 1", (4) 3", (2) 3.5" and (2) 4" - 7/16" grade 8 bolts
 View is from front of car

Laine Z8 Conversion	
DRAWN Brian Laine 8/2007	Motor Mount Cradle
MATERIAL Steel	
FINISH black powder coat	Not to be used for commercial purposes. Author of of this drawing assumes no liability in its use and makes no suitability claims.
TOLERANCE +/- .062"	
SCALE not to scale	
240ZFrontMotorMount.dc	

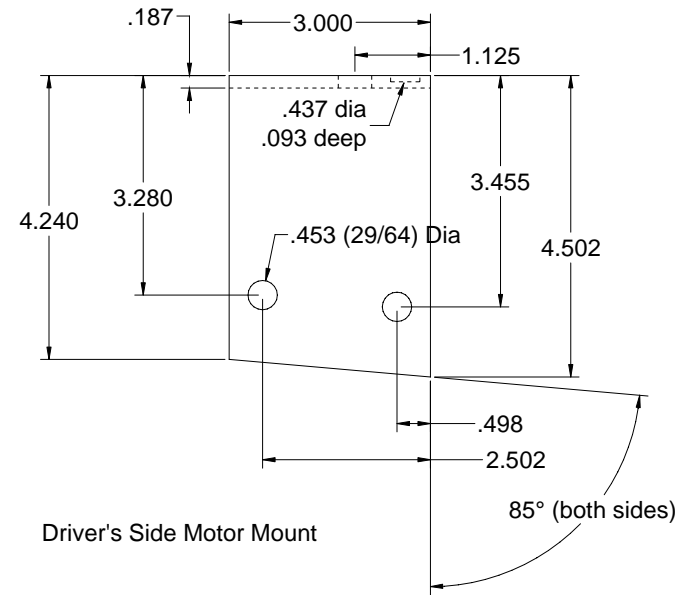


Passenger Side Motor Mount



Profile, typical to both

Views shown from front of car



Driver's Side Motor Mount

Laine Z8 Conversion

DRAWN
Brian Laine 8/2007

MATERIAL
Steel

FINISH
black powder coat

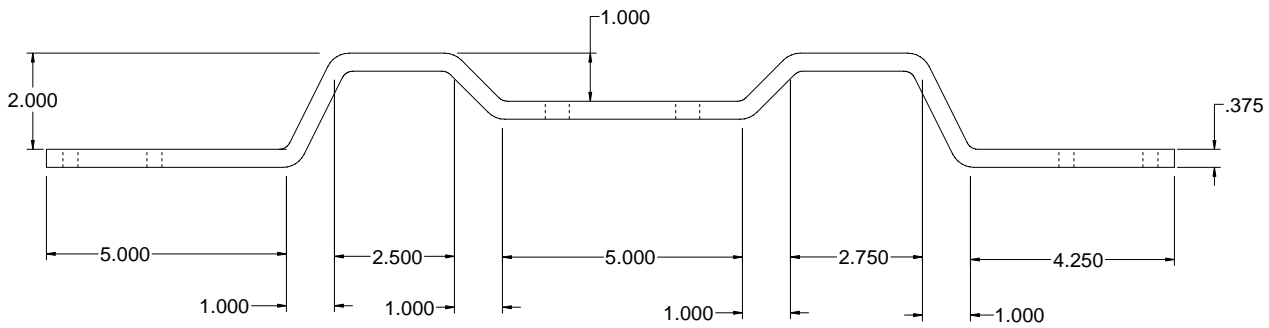
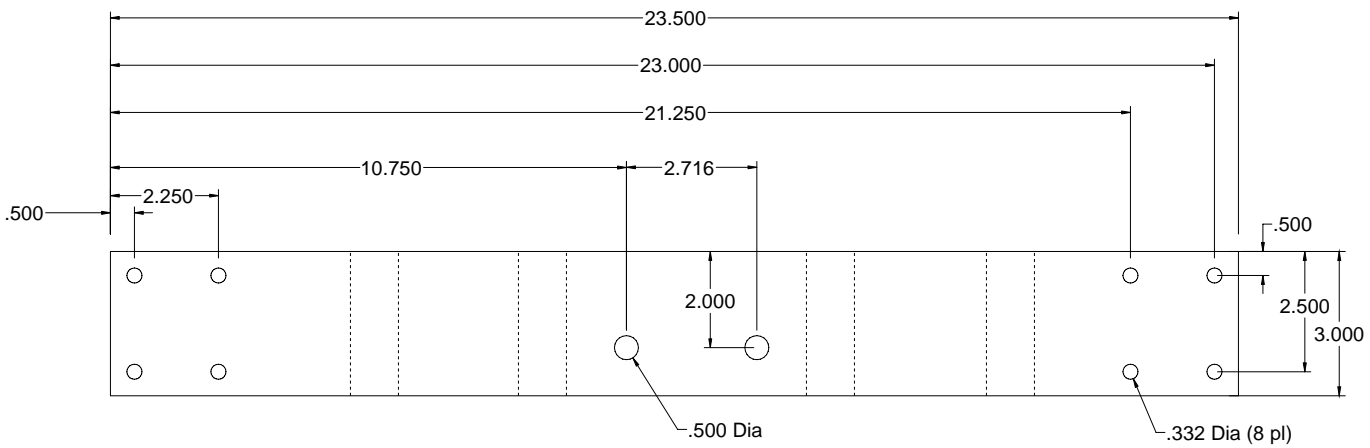
TOLERANCE
+/- .062"

SCALE not to scale

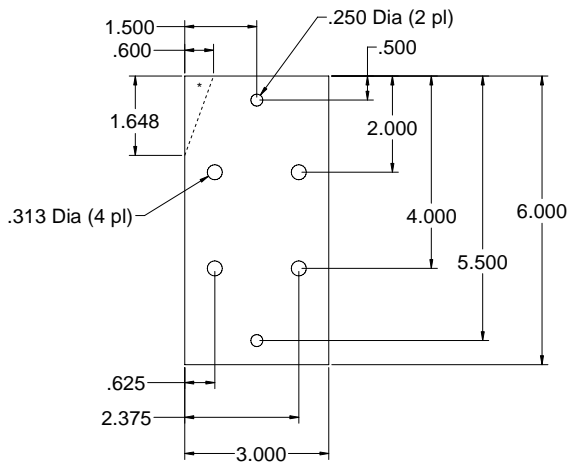
Motor Mounts

Not to be used for commercial purposes. Author of of this drawing assumes no liability in its use and makes no suitability claims.

240ZFrontMotorMount1.dc



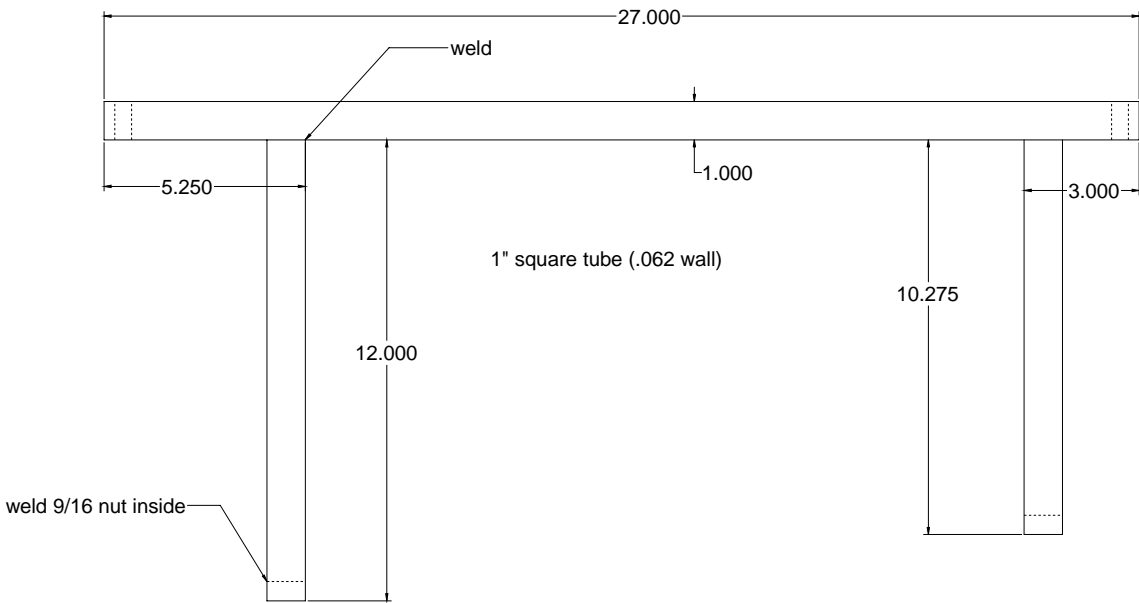
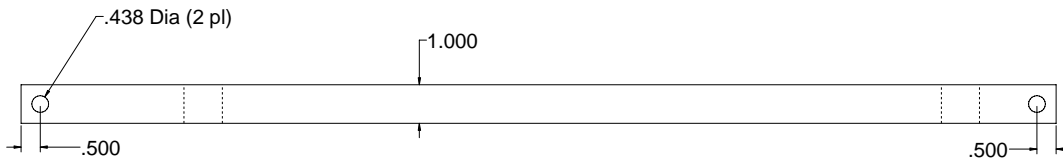
view is from rear of car



Mounting Plates top of floorpan:

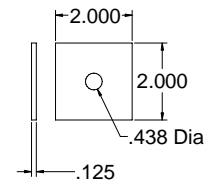
- * - chamfer upper left corner of pass. side only
- weld heads of (4) 5/16-18 x 1 1/4 and (2) 1/4-20 x 3/4 bolts
- weight 7.9 lbs
- 0.187 thick stock

Laine Z8 Conversion	
DRAWN Brian Laine 8/2007	Transmission Mount
MATERIAL Steel	Not to be used for commercial purposes. Author of of this drawing assumes no liability in its use and makes no suitability claims.
FINISH black powder coat	
TOLERANCE +/- .062"	
SCALE not to scale	240ZTransmissionMount.dc



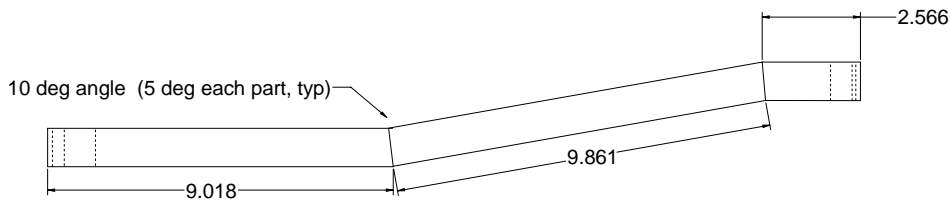
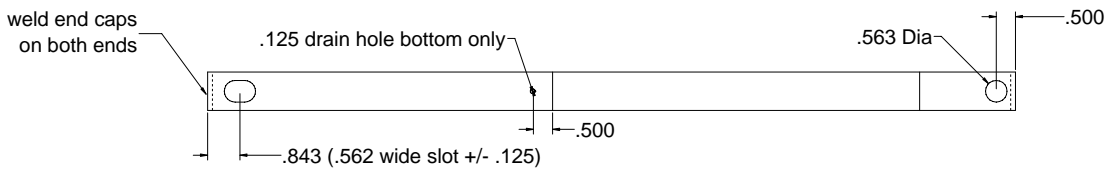
Cover well with .060 AL cut 27.5" dia.

Mount 15.75" o/c with 7/16x2 bolts using plates shown below topside



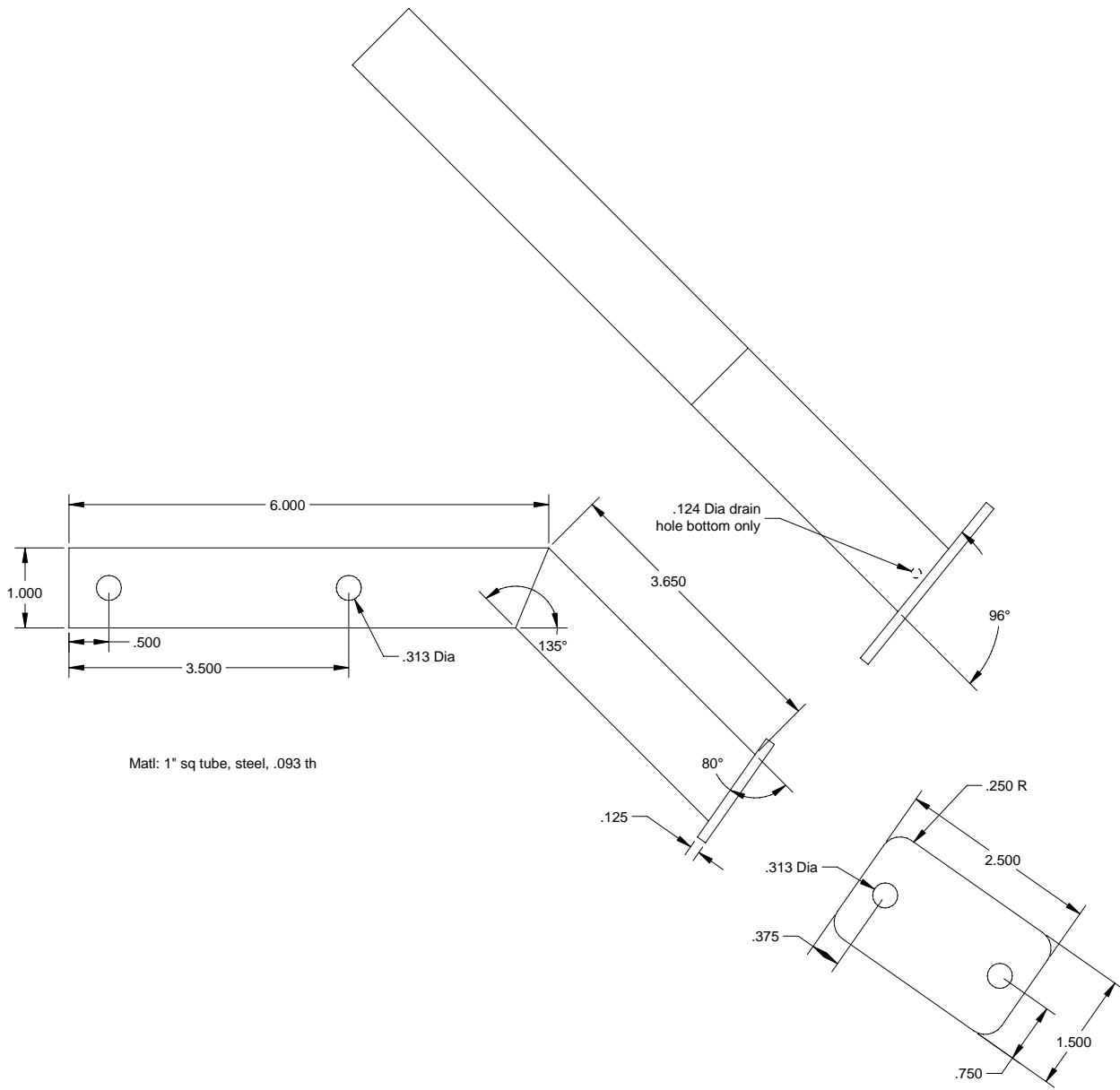
Install padding between bars and tank

Qty: 2



Shown with corrections from as-built

Laine Z8 Conversion	
DRAWN Brian Laine 8/2007	Fuel Tank Mount
MATERIAL Steel	Not to be used for commercial purposes. Author of this drawing assumes no liability in its use and makes no suitability claims.
FINISH black powder coat	
TOLERANCE +/- .062"	
SCALE not to scale	240ZFuelTankMount.dc



Laine Z8 Conversion

DRAWN
Brian Laine 8/2007

Clutch Brace

MATERIAL
Steel

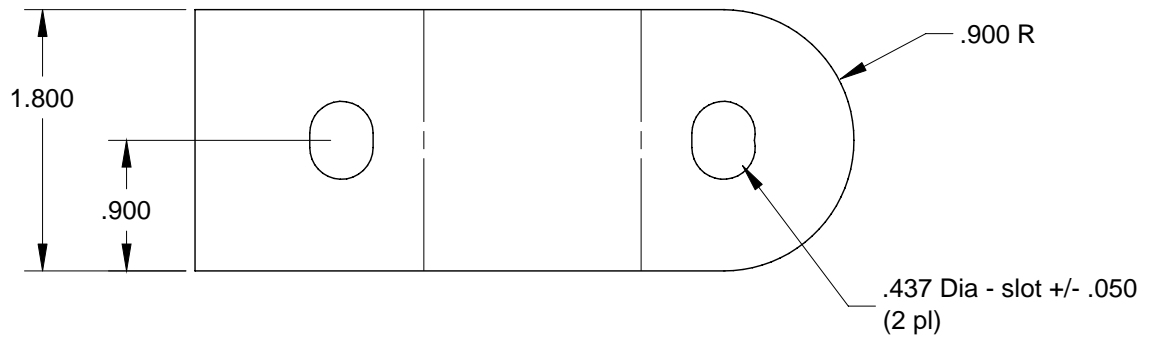
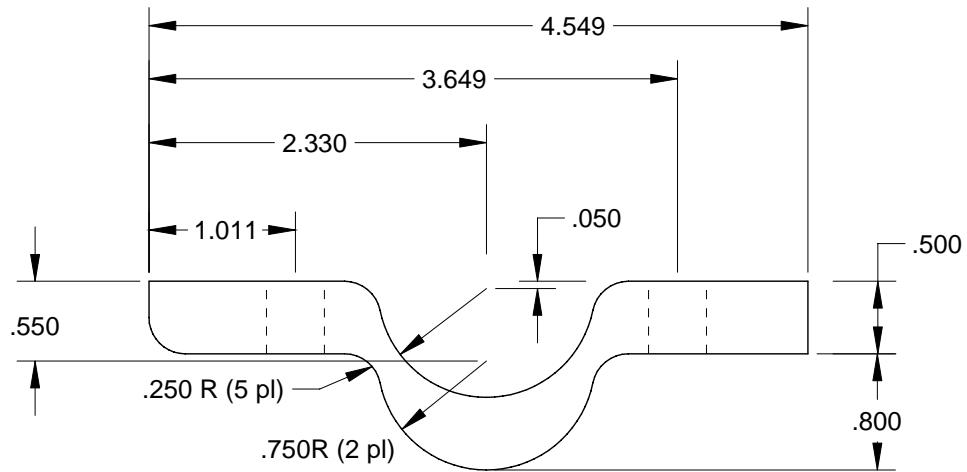
FINISH
black powder coat

Not to be used for commercial purposes. Author of of this drawing assumes no liability in its use and makes no suitability claims.

TOLERANCE
+/- .005"

SCALE not to scale

240ZClutchMasterBrace.dc



Qty: 2

Laine Z8 Conversion

DRAWN
Brian Laine 8/2007

Front Diff Spacer

MATERIAL
AL

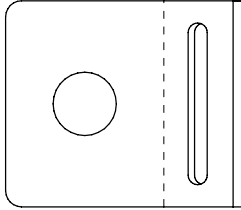
FINISH
none

TOLERANCE
+/- .005"

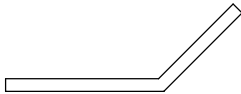
SCALE not to scale

Not to be used for commercial purposes. Author of this drawing assumes no liability in its use and makes no suitability claims.

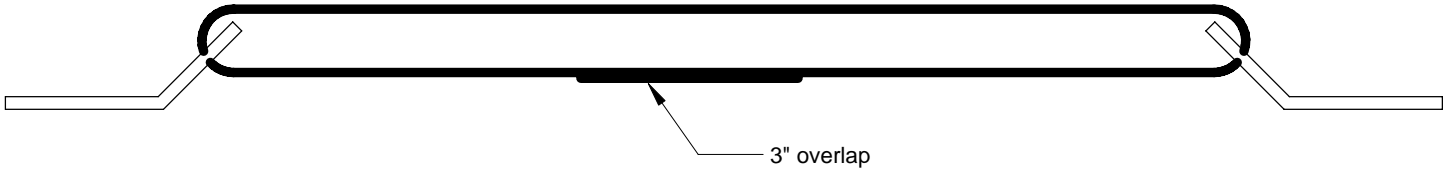
240Z Diff Mount Spacer.dc



1" support brackets each end
(McMaster Carr)



1" webbing (McMaster Carr)



Unsewn material with front of diff lowered: 22" long,
with stock diff mounting: 23"

Laine Z8 Conversion

DRAWN
Brian Laine 8/2007

Diff Limit Strap

MATERIAL
Steel

Not to be used for commercial purposes. Author of of this drawing assumes no liability in its use and makes no suitability claims.

FINISH
None

TOLERANCE
+/- .062"

SCALE not to scale

240ZDiffLimitStrap.dc